

Orange and black wings flutter over a field on a sunny summer day. They are the bright wings of a monarch butterfly. The monarch flies from flower to flower. It stops to rest for just a moment. Then it is off again.



The butterfly has laid an egg on a milkweed plant. The egg is about the size of a pencil point. It sparkles in the sunlight like a tiny jewel. This is the first stage in the life of a new monarch butterfly.





A few days later, the egg looks darker. The head of a caterpillar is pushing through the thin shell. The caterpillar is also called a larva. It will crawl out of the egg and onto the plant.



The caterpillar begins eating the moment it hatches. The first thing it eats is the eggshell it just left! After that, it eats only one thing—milkweed leaves.





The caterpillar eats and grows until it can no longer fit inside its tight skin. It must molt, or shed its skin. It leaves its old skin behind and crawls away in a new, looser skin. The caterpillar will molt four or five times in about two weeks.



Then something amazing happens. The caterpillar stops crawling. It even stops eating. Instead, it hangs upside-down from its hind legs. Its skin splits and slides up. Underneath is a hard case. The caterpillar is beginning its next life stage. It is now called a chrysalis, or pupa.









At first the chrysalis is pale green with gold dots. Then the hard case slowly becomes clear. Inside, you can see that the pupa's body has changed. It is turning into an adult butterfly.





The chrysalis splits, and a monarch butterfly crawls out. Its wings are damp and crumpled. They straighten as they slowly fill with blood. The butterfly sits quietly for a few hours as its wings dry and stiffen. Then it flies off.



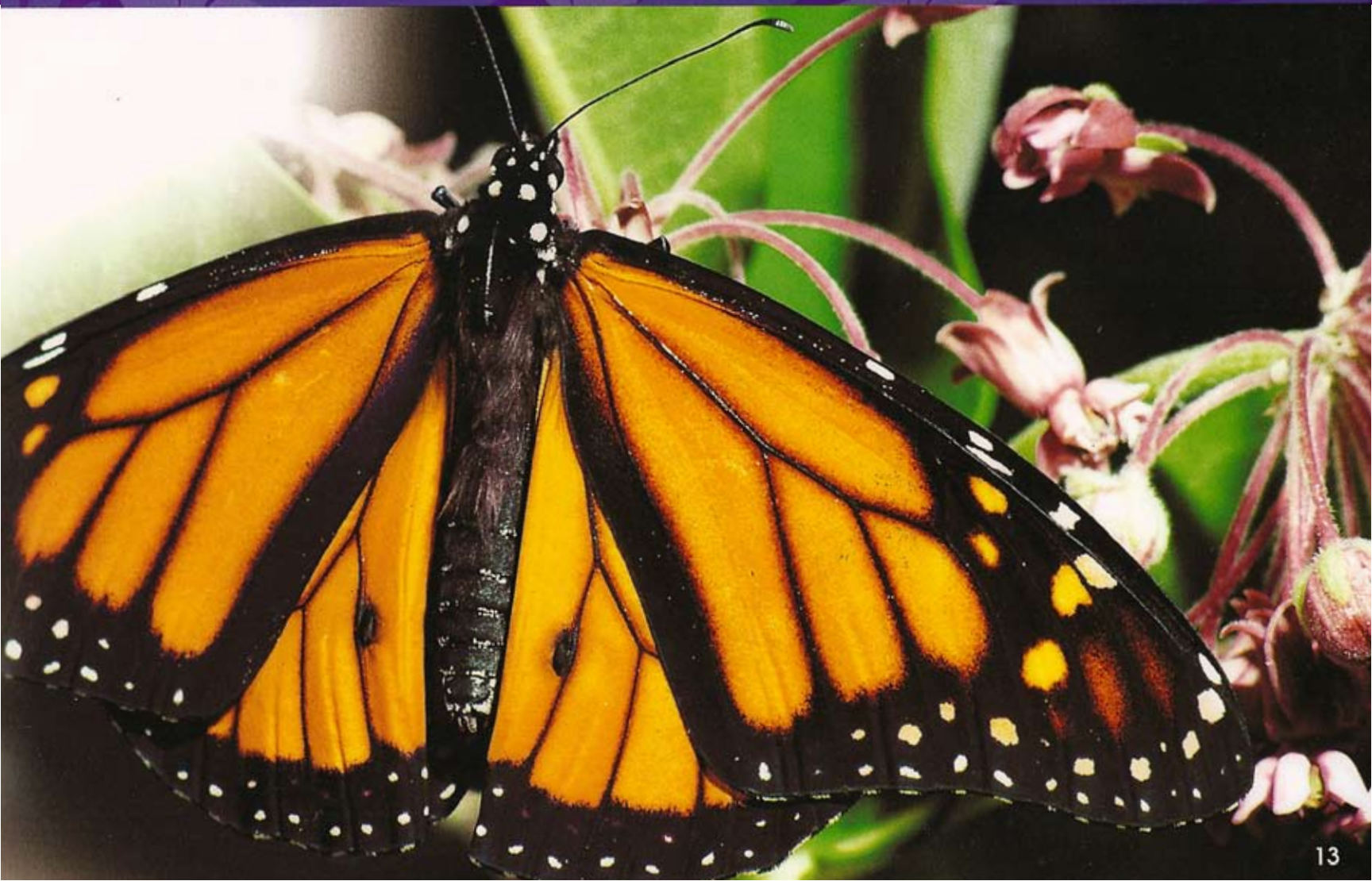




Like its parents, this monarch visits milkweed flowers to feed on nectar. It has gone through all four stages of its life cycle—egg, larva, pupa, and adult—in about a month's time. These changes are called metamorphosis. Now new female butterflies will lay their eggs on milkweed plants, and the monarch life cycle will continue.







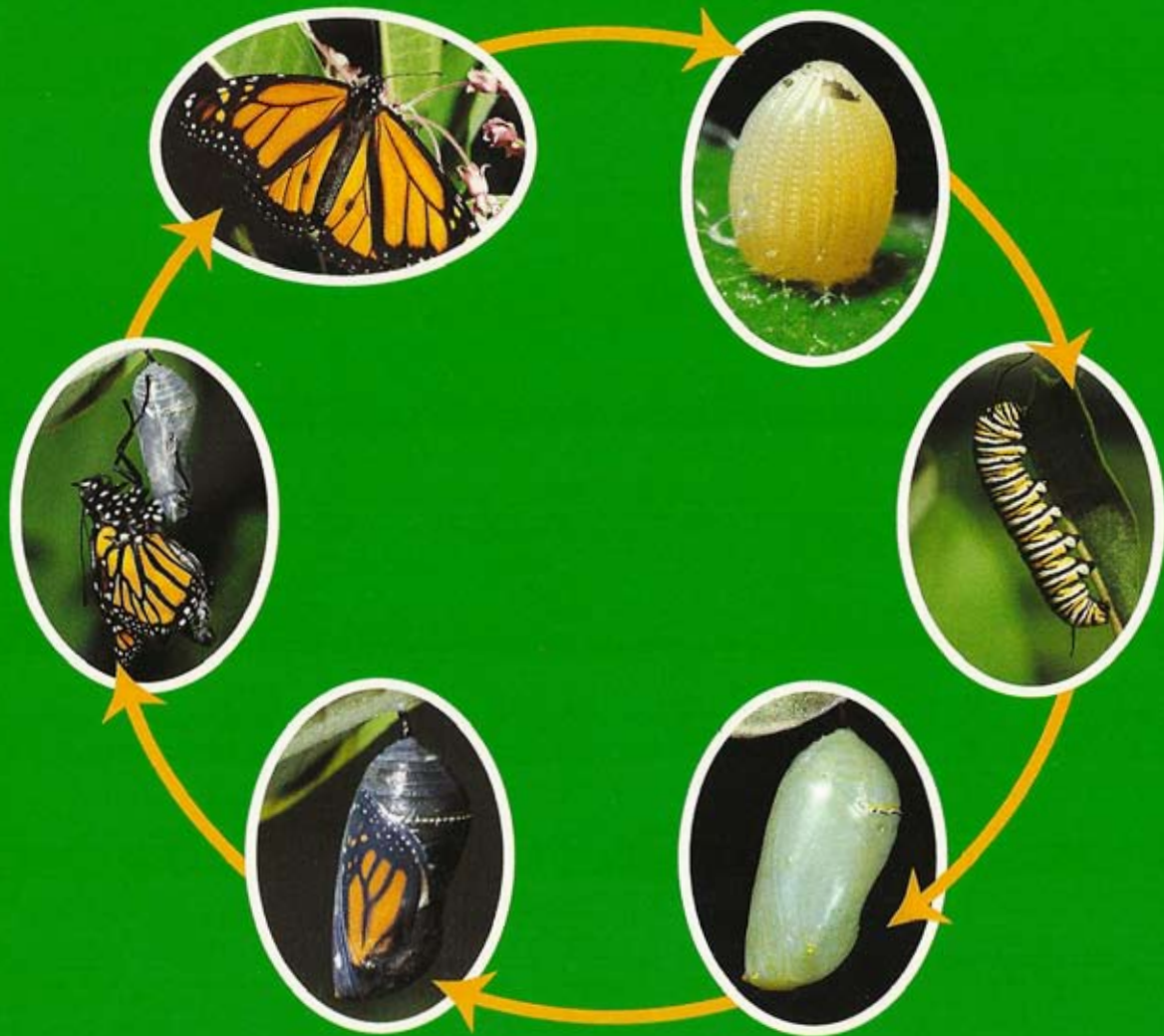
Can you put these in order?







Answer





# CHOOSE FROM 12 TITLES IN THIS LIFE CYCLES SERIES!

CTP 3059 Monarch Butterfly

CTP 3060 Bean

CTP 3061 Sunflower

CTP 3062 Wood Frog

CTP 3063 Ladybug

CTP 3064 Chicken

CTP 3065 Jumping Spider

CTP 3066 Maple Tree

CTP 3067 Green Snake

CTP 3068 Hummingbird

CTP 3069 Horse

CTP 3070 Fighting Fish